



The Stable School

Attendance Newsletter

July 2024



Welcome to The Stable School attendance newsletter.

The purpose is to share with you our school attendance data, provide practical support in following our attendance procedures and support you to ensure your child's attendance is as good as possible.

ATTENDANCE MATTERS

6 days or less
absence per year
97% or above
VERY GOOD
THIS IS YOUR
TARGET

Between
7 and 19 days
absence per year
90% - 96%
BELOW
EXPECTATIONS

More
than 19 days
absence per year
Under 90%
POOR
ATTENDANCE

A reminder that the following reasons are not acceptable for children to be absent from school.

- ❖ Shopping, family day out
- ❖ Celebrating their birthday or family birthday
- ❖ Parental illness or appointments
- ❖ Holidays taken in term time including long weekends – Monday and Friday





BCP and the stable School working together to improve school attendance



You may have recently heard about the changes to 'holiday fines'. BCP Council, in partnership with your child's school, would like to take the opportunity to update you on the changes that the Department for Education have made, and why they are happening.

Every moment in school counts and days missed add up quickly. Evidence shows that pupils who have good attendance enjoy better wellbeing and school performance than those who don't.

There are only a few circumstances where a child is allowed to miss school, such as illness or where the school has given permission because of an exceptional circumstance.

However, if your child misses school without a good reason, local councils and schools can intervene and you may be issued a fine.

We're also introducing a new national framework which will mean all councils have the same rules in place for when they need to consider a fine. We explain more on this below.

It's important to acknowledge that children with long-term medical or more serious mental health conditions, and those with special educational needs and disabilities may face additional barriers.

For children who face complex barriers to attendance, schools should have sensitive conversations with **How much could I be fined if my child misses school?**

In the majority of cases, schools and local authorities will try and provide support to help you improve your child's attendance first, but if this isn't effective or the absence is for unauthorised term time holiday, parents may face paying a fine.

Currently, it's the responsibility of the local authority to decide when to issue fines to parents, meaning the process varies from council to council.

However, under the new national framework, all schools will be required to consider a fine when a child has missed 10 or more sessions (5 days) for unauthorised reasons.

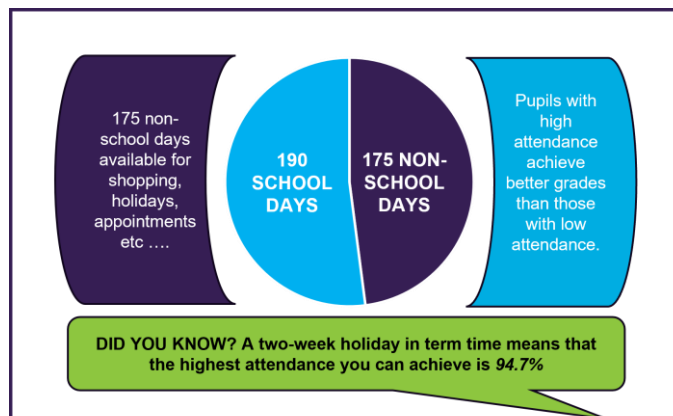
From August 2024, the fine for school absences across the country will be **£80 if paid within 21 days**, or **£160 if paid within 28 days**.

In the case of repeated fines, if a parent receives a second fine for the same child within any three-year period, this will be charged at the higher rate of £160.

Fines per parent will be capped to two fines within any three-year period. Once this limit has been reached, other action like a parenting order or prosecution will be considered.

If you're prosecuted and attend court because your child hasn't been attending school, you could get a fine of up to £2,500.

If your child is facing barriers to school attendance due to special education needs or disabilities (SEND), schools, local authorities and wider services are required to work together to provide the right support .



PENALTY NOTICE FINES FOR TERM-TIME HOLIDAYS ARE CHANGING

1

First Offence

The first time a Penalty Notice is issued for an unauthorised term time holiday the fine amount will be:
£80 per parent, per child if paid within 21 days.
Increasing to £160 if paid between days 22-28.

Second Offence (within 3 years)

The second time a Penalty Notice is issued for unauthorised absence the amount will be:
£160 per parent, per child, payable within 28 days.

2

3

Third Offence and any further offences (within 3 years)

The third time an offence is committed a Penalty Notice will not be issued and local authorities will need to consider other available measures to address the absence concerns. This may mean that cases are presented before a Magistrates' Court. If convicted, sanctions can include a fine of up to £2,500 and a prison sentence of up to 3 months, and you will have a criminal record.

Cases found guilty in the Magistrates' Court can show on the parent's future DBS certificate due to 'failure to safeguard a child's education'.

Who may be fined?

Penalty Notice fines are issued to each parent who allows their child to be absent from school.

National Threshold:

All schools in England must consider a Penalty Notice when a pupil has 10 unauthorised absences in a 10 school-week rolling period. For example, a 5-day holiday would meet this threshold.

BCP
Council



Absence due to illness .

Absence due to illness!

We understand and appreciate that children can be ill, and it is not always easy to decide whether to send them to school or keep them at home. If your child is too poorly to attend school, please ring the school office before 8.30am with full details of your child's illness. If we do not hear from you, we will contact you or visit you to find out.

RED – stay at home

Sickness and Diarrhoea
48 hours before your child can return to school .

Amber – Seek Advice

Headache, feeling sick, stomach ache
Children often feel unwell if anxious, if in doubt seek medical

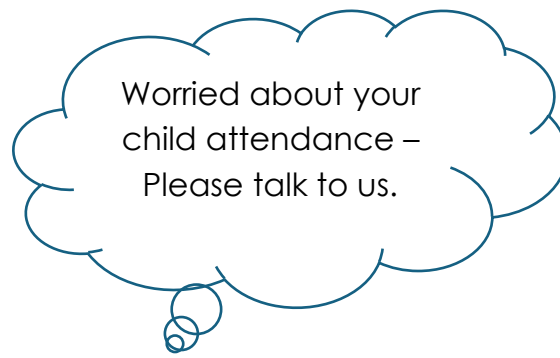
Green – Come to school.

Mild cough, cold, tired .
We will always contact you if your child's unwell during the school day.

Support and guidance:

Speak with GP or NHS 111

<https://www.nhs.uk/live-well/is-my-child-too-ill-for-school>



Ensuring your child's safety when you are away:

If you are planning to leave your child in the care of someone else, whether it is an older sibling, relative, or another guardian, it is crucial to inform the school and provide us with their contact details.

This enables us to stay connected in case of emergencies and ensures clarity regarding decision-making for your child's welfare.

Home visits— why do they happen?

In cases where we have concerns about a child's attendance or safety, we may conduct home visits. If we have not received any communication regarding your child's absence, we will attempt to reach you through various channels such as phone calls, emails, and messages. If we are still unable to make contact, a home visit will be scheduled by the third day to ensure the safety and well-being of everyone involved

Should my child attend school if they are anxious or worried?

It is normal for children to feel a little anxious sometimes. They may get a tummy ache or headache or have problems eating or sleeping. Avoiding school can make a child's anxiety about going to school worse.

It is good to talk about any worries they may have such as bullying, friendship problems, schoolwork or sensory problems. You can also work with the school to find ways to help them. If your child is still struggling and it is affecting their everyday life, please come and speak to a member of the safeguarding and attendance team. We will then be able to advise you on advice and support that is available to you.

Contact - Linda@thestableschool.co.uk Mobile: 07548 343363
or Dave@thestableschool.co.uk Mobile: 07548 343360

What are persistent absentees (PAs)?

Persistent absentees are those children who have missed more than 10% of their school sessions. In a year there are 190 teaching days. If a child misses 19 days or more, they will fall into this bracket. Children who are persistently absent, for whatever reason, are monitored to ensure their attendance improves. The school may send letters informing you of your child's attendance and hold meetings to discuss how we can work together to try to improve your child's attendance.

Parent and Carer Responsibilities:

- Parents and carers are responsible for ensuring their child arrives punctually for school registration.
- It is expected that parents and caregivers communicate with the school daily to report any absences, providing a reason and indicating the anticipated return date.
- Regular updates should be provided to the school, along with any relevant medical documentation when applicable.
- Scheduling routine medical or dental appointments during school hours should be avoided whenever possible.
- In cases where unavoidable appointments arise, parents should notify the school in advance

What Constitutes Medical Evidence?

If your child is absent from school due to medical reasons, we may require appropriate documentation to explain the absence. Accepted forms of medical evidence include:

- Prescription or prescribed medication including the child's name
- Documentation of a GP or hospital appointment, such as text messages, emails, or appointment cards
- Hospital appointment letters Medical and Dental Appointments: Whenever possible, appointments should be scheduled outside of school hours. If this is not feasible, please provide documentation of the appointment, such as an appointment card, letter, or text message.

Children are expected to attend school before and after their appointment.

Attendance concerns contact details :

Email Linda@thestableschool.co.uk Mobile 07548 343363

Email Dave@thestableschool.co.uk Mobile 07548 343360

School commences – Tuesday 3rd September 2024.